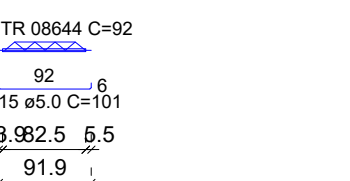


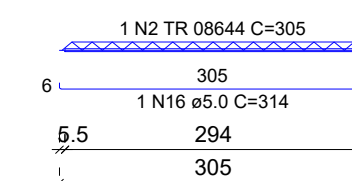
RELAÇÃO DO AÇO					
AÇO	N	DIAM (mm)	QUANT	C.UNIT (cm)	C.TOTAL (cm)
V204-L3	1	5.0	84	109	9156
V301-L4	2	5.0	19	169	3211
V304-L4	3	10.0	404	89	35956
V402-L5	4	6.3	10	382	3820
	5	8.0	8	917	7336
	6	8.0	8	951	7608
	7	8.0	2	823	1646
	8	8.0	4	851	3404
	9	8.0	2	817	1634
	10	10.0	2	139	278
	11	10.0	4	918	3664
	12	10.0	1	705	705
	13	10.0	1	970	970
	14	10.0	1	315	315
	15	10.0	2	386	772
	16	10.0	3	485	1455
	17	10.0	2	195	390
	18	10.0	2	816	1632
	19	10.0	1	175	175
	20	10.0	2	862	1724
	21	12.5	2	815	1630
	22	12.5	1	151	151
	23	12.5	1	155	155
	24	12.5	1	215	215
	25	12.5	2	205	412
	26	12.5	2	879	1758

RESUMO DO AÇO			
AÇO	DIAM (mm)	C.TOTAL (m)	PESO + 0% (kg)
CA50	6.3	38.2	9.3
	8.0	219.1	86.4
	10.0	145.5	89.7
CA60	12.5	43.2	41.6
	5.0	483.2	74.5
PESO TOTAL (kg)			
CA50	227.1		
CA60	74.5		
Volume de concreto (C=30) = 4.98 m³			
Área de forma = 64.22 m²			

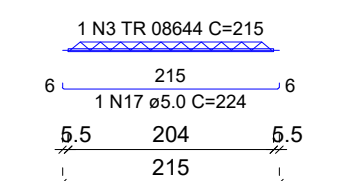
VT101a (33 unidades)
(L101)
ESC 1:75



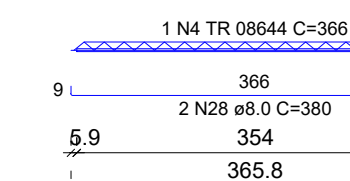
VT102a (33 unidades)
(L102)
ESC 1:75



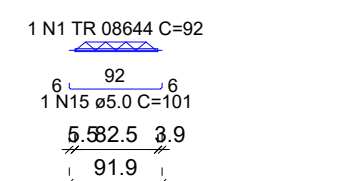
VT103a (33 unidades)
(L103)
ESC 1:75



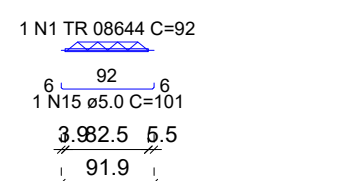
VT104a (24 unidades)
(L104)
ESC 1:75



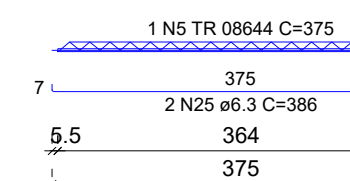
VT105a (22 unidades)
(L105)
ESC 1:75



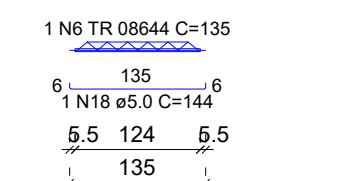
VT106a (22 unidades)
(L106)
ESC 1:75



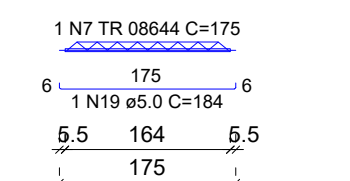
VT107a (16 unidades)
(L107)
ESC 1:75



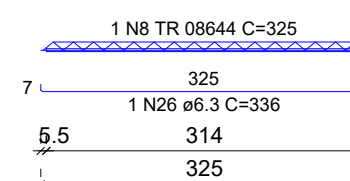
VT108a (28 unidades)
(L108)
ESC 1:75



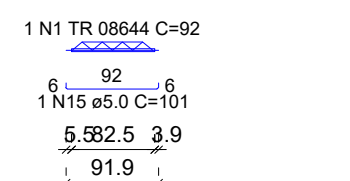
VT108b (5 unidades)
(L108)
ESC 1:75



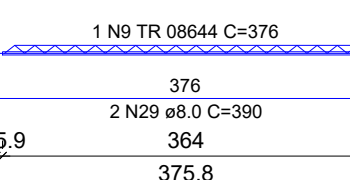
VT109a (19 unidades)
(L109)
ESC 1:75



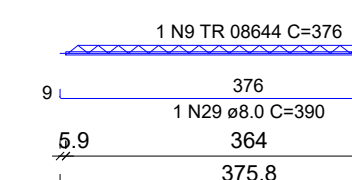
VT110a (19 unidades)
(L110)
ESC 1:75



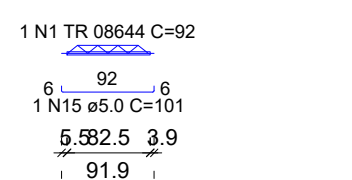
VT111a (11 unidades)
(L111)
ESC 1:75



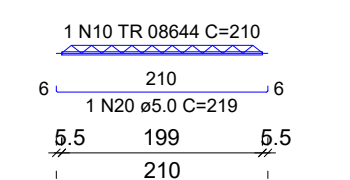
VT111b (6 unidades)
(L111)
ESC 1:75



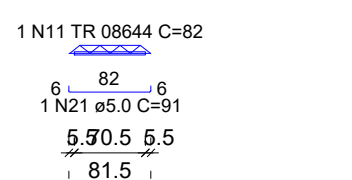
VT112a (31 unidades)
(L112)
ESC 1:75



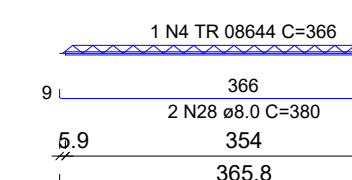
VT112b (8 unidades)
(L112)
ESC 1:75



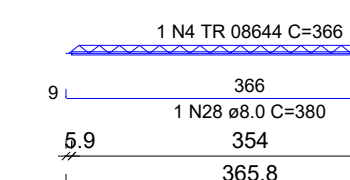
VT113a (11 unidades)
(L113)
ESC 1:75



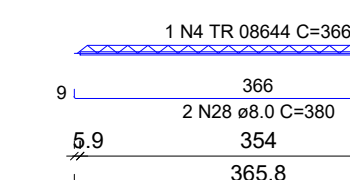
VT114a (19 unidades)
(L114)
ESC 1:75



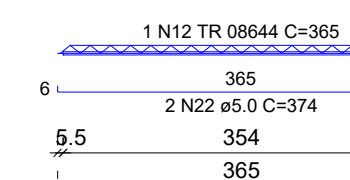
VT115a (14 unidades)
(L115)
ESC 1:75



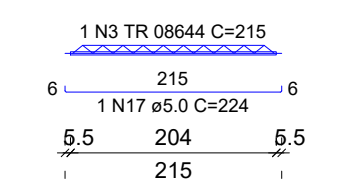
VT115b (25 unidades)
(L115)
ESC 1:75



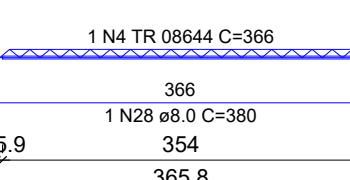
VT116a (1 unidades)
(L116)
ESC 1:75



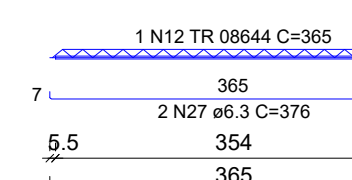
VT117a (87 unidades)
(L117)
ESC 1:75



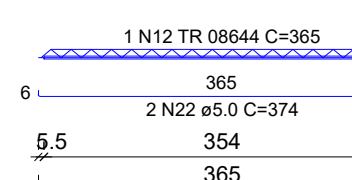
VT118a (1 unidades)
(L118)
ESC 1:75



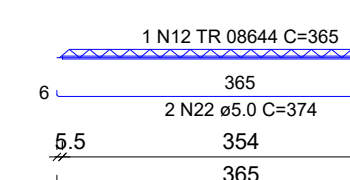
VT119a (35 unidades)
(L119)
ESC 1:75



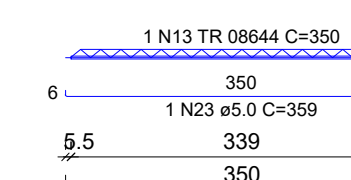
VT120a (29 unidades)
(L120)
ESC 1:75



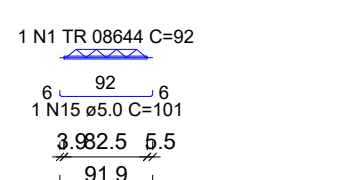
VT121a (1 unidades)
(L121)
ESC 1:75



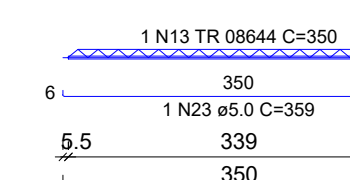
VT122a (2 unidades)
(L122)
ESC 1:75



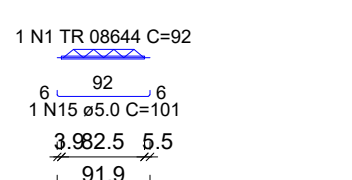
VT122b (27 unidades)
(L122)
ESC 1:75



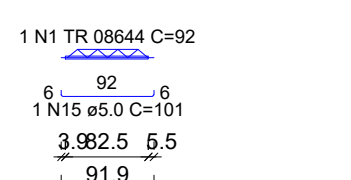
VT123a (9 unidades)
(L123)
ESC 1:75



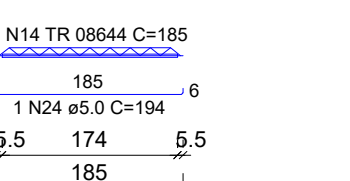
VT124a (31 unidades)
(L124)
ESC 1:75



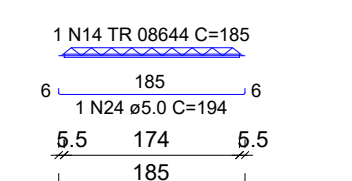
VT125a (7 unidades)
(L125)
ESC 1:75



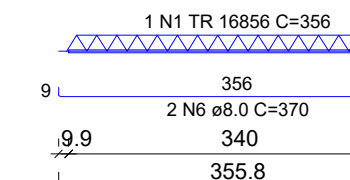
VT126a (3 unidades)
(L126)
ESC 1:75



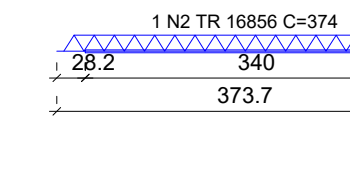
VT127a (3 unidades)
(L127)
ESC 1:75



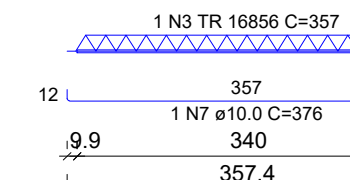
VT201a (8 unidades)
(L201)
ESC 1:75



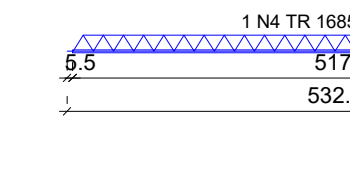
VT201b (1 unidades)
(L201)
ESC 1:75



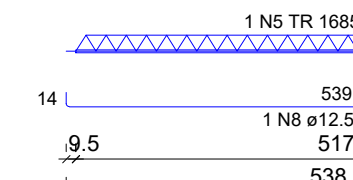
VT202a (9 unidades)
(L202)
ESC 1:75



VT203a (2 unidades)
(L203)
ESC 1:75



VT203b (16 unidades)
(L203)
ESC 1:75



RELAÇÃO DO AÇO					
8xVT201a	VT201b	9xVT202a			
2xVT203a	16xVT203b				
AÇO	N	DIAM (mm)	QUANT	C.UNIT (cm)	C.TOTAL (cm)
CA60	1	TR 08644	8	365	2948
	2	TR 08644	1	374	374
	3	TR 08644	9	357	3213
	4	TR 08644	2	532	1064
	5	TR 08644	16	339	5424
	6	TR 08644	16	370	5920
	7	TR 08644	9	376	3384
	8	TR 08644	16	561	8976

RESUMO DO AÇO			
AÇO	DIAM (mm)	C.TOTAL (m)	PESO + 0% (kg)
CA50	8.0	59.2	23.4
	10.0	33.8	20.9
	12.5	89.8	86.5
CA60	TR 08644	161.2	231.5
PESO TOTAL (kg)			
CA50	130.7		
CA60	231.5		
Volume de concreto (C=35) = 0.00 m³			
Área de forma = 0.00 m²			

RELAÇÃO DO AÇO

AÇO	N	DIAM (mm)	QUANT	C.UNIT (cm)	C.TOTAL (cm)
V204-L3	1	5.0	84	109	9156
V301-L4	2	5.0	19	169	3211
V304-L4	3	10.0	404	89	35956
V402-L5	4	6.3	10	382	3820
	5	8.0	8	917	7336
	6	8.0	8	951	7608
	7	8.0	2	823	1646
	8	8.0	4	851	3404
	9	8.0	2	817	1634
	10	10.0	2	139	278
	11	10.0	4	918	3664
	12	10.0	1	705	705
	13	10.0	1	970	970
	14	10.0	1	315	315
	15	10.0	2	386	772
	16	10.0	3	485	1455
	17	10.0	2	195	390
	18	10.0	2	816	1632
	19	10.0	1	175	175
	20	10.0	2	862	1724
	21	12.5	2	815	1630
	22	12.5	1	151	151
	23	12.5	1	155	155
	24	12.5	1	215	215
	25	12.5	2	205	412
	26	12.5	2	879	1758

RESUMO DO AÇO

AÇO	DIAM (mm)	C.TOTAL (m)	PESO + 0% (kg)
CA50	6.3	38.2	9.3
	8.0	219.1	86.4
	10.0	145.5	89.7
CA60	12.5	43.2	41.6
	5.0	483.2	74.5
PESO TOTAL (kg)			
CA50	227.1		
CA60	74.5		
Volume de concreto (C=30) = 4.98 m³			
Área de forma = 64.22 m²			

RELAÇÃO DO AÇO

AÇO	N	DIAM (mm)	QUANT	C.UNIT (cm)	C.TOTAL (cm)
CA60	1	TR 08644	192	92	17664
	2	TR 08644	33	305	10065
	3	TR 08644	120	215	25800
	4	TR 08644	63	366	30378
	5	TR 08644	16	375	6000
	6	TR 08644	28	135	3780
	7	TR 08644	5	175	875
	8	TR 08644	19	325	6175
	9	TR 08644	17	376	6392
	10	TR 08644	8	210	1680
	11	TR 08644	11	82	902
	12	TR 08644	66	365	24090
	13	TR 08644	11	350	3850
	14	TR 08644	6	185	1110
	15	5.0	192	101	19392
	16	5.0	33	314	10362
	17	5.0	120	224	26880
	18	5.0	28	144	4032
	19	5.0	5	184	920
	20	5.0	8	219	1752
	21	5.0	1	91	91
	22	5.0	62	374	23188
	23	5.0	6	359	3948
	24	5.0	6	194	1164
	25	6.3	32	386	12352
	26	6.3	19	336	6384
	27	6.3	70	376	26320
	28	8.0	151	380	57380
	29	8.0	28	390	10920

RESUMO DO AÇO

AÇO	DIAM (mm)	C.TOTAL (m)	PESO + 0% (kg)
CA50	6.3	450.8	110.3
	8.0	683	269.5
CA60	TR 08644	1387.6	1019.9
PESO TOTAL (kg)			
CA50	379.8		



PREFEITURA MUNICIPAL DE TABAPUÁ

Estado de São Paulo

CNPJ. 45.128.816/0001-33



UBS TIPO III

PROJETO DE ESTRUTURA DE CONCRETO

DETALHE: VIGAS SUPERIORES 03/03 E TRILHO DAS LAJES

EST

Folha

12/24

Escala:

INDICADA

ART n.º

2620242173079